

EMVeriCard

Be ready for EMVCo Level 1 smart card certification.

Overview.

The **EMVeriCard** tool simplifies and improves smart card testing by automating the processing of test scripts, ensuring the complete validation of your EMV® smart card. It is used to test compliance of the protocol and electrical components in line with EMV Level 1.

Ensure your smart card is ready for EMVCo Level 1 contact certification.

EMVeriCard 3.1 is the only accredited tool available on the market to achieve contact L1 EMVCo certification. The tool enhances the global interoperability of smart cards by preparing innovative EMV smart cards for certification against EMVCo test plans.

How it works.

The tool is composed of the **EMVeriCard** software platform, electrical and protocol test suites, and the terminal emulator (MP300 TC3). After configuration, the software provides a list of test cases to run. Simply connect the EMV card product to the hardware to perform the test session.

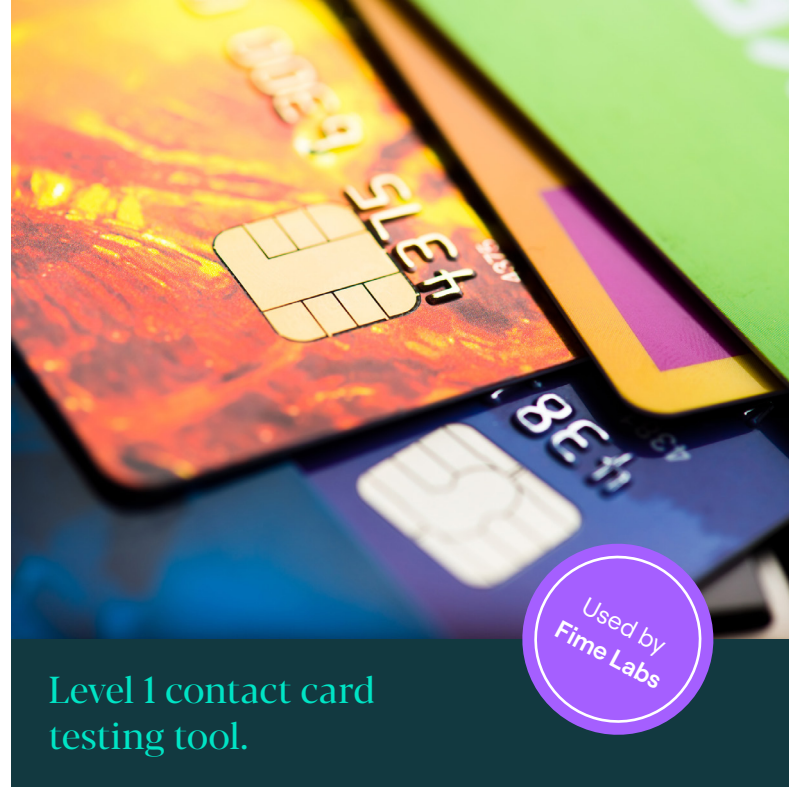
Fime can help you at any stage of your project lifecycle.

Define

Design

Deliver

Test



Level 1 contact card testing tool.

Key benefits

- Test with an officially qualified tool for pre-validation to save time and money at the final certification.
- Get to market faster with automated electrical and protocol EMVCo Level 1 testing, with a single tool.
- Easily and quickly understand your product's behaviour with the detailed analysis user interface.
- Share results easily by generating reports or sharing session logs (recipients do not need a license to review logs).

Key features

- Easily adaptable and configurable to your smart card.
- Accelerate testing by embedding a simplified user interface.
- Quickly understand product behavior by using the complete analysis view.
- Compliant for T=0 and T=1 protocol exchanges.

Libraries.

Payment authority

Level 1 Electrical for smart card

EMVCo

Level 1 Protocol for smart card

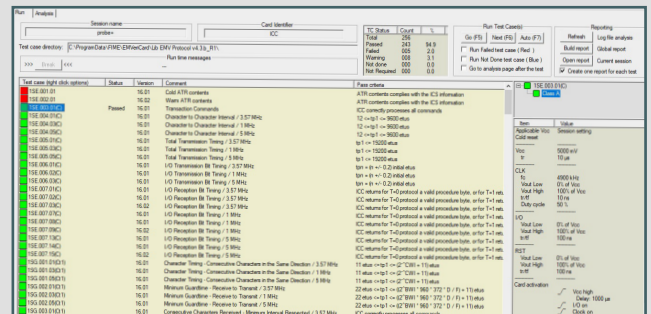
Level 1 Type Approval version 4.3b,
September 2020

What's in the box?

- Emulator hardware: National Instruments MP300 TC3.
- Software installer.
- USB token for product license (needed to run test cases).

Technical specifications

- Store all ICC data related to the Implementation Conformance Statement (ICS).
- Perform post-control of data by string comparison between ICS and execution data.
- Select scripts for automatic test session.
- Multiple script execution management.
- Report generation.
- T=0 or T=1 protocol exchanges.
- Calculation and graphic presentation of timings.
- Warning and error display.
- Magnetic cursors management.



User interface

*EMV® is a registered trademark in the U.S. and other countries and an unregistered trademark elsewhere. The EMV trademark is owned by EMVCo, LLC.

Contact

To learn more about how Fime can help your business:

fime.com
sales@fime.com

F-T-EMVERICARD-AA
Level 1 contact card testing tool.

© Fime 2024