



Biometrics testing services

Evaluate and certify your biometric authentication products.

Demonstrate biometric product quality with a trusted partner.

Verify the performance (FAR, FRR, FMR, FNMR, FTA, FTE) and Presentation Attack Detection (PAD, anti-spoofing, IAPMR, APCER, BPCER) of the biometric solutions, the end-user devices, or the final use cases on the field.

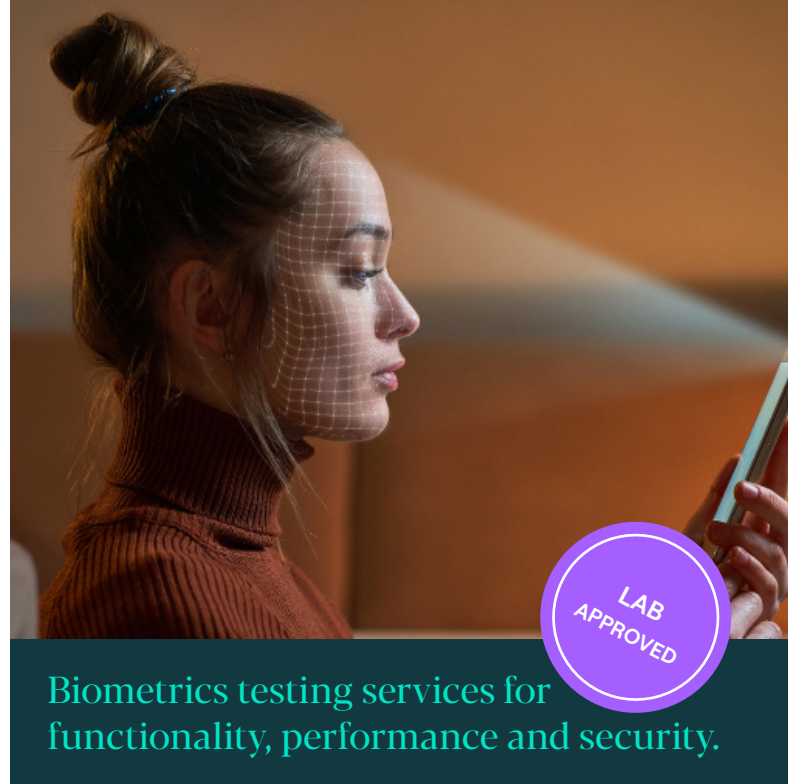
How it works

- Define testing scope based on target standards.
- Product registration (if necessary).
- Book a test session.
- Provide test samples with required applications.
- Perform testing with possible implementations.
- Deliver test report to get certificate or a diploma.

Fime can help you at any stage of your project lifecycle.



*Android is a trademark of Google LLC.



Key benefits

- Evaluations for fingerprint, facial, voice, palm, behavior, multi-factor modalities and different environmental conditions.
- Dedicated research team working on innovations for biometrics evaluations.
- Automation development to improve test efficiency.
- Customizable testing strategy or benchmark evaluation with Fime.
- Extended services beyond test such as test data diversity or test kit creation.
- Fime is ahead of the curve by participating in multiple biometric technical standard working groups.
- Trusted ISO/IEC 17025 laboratory.
- Recognized by leading industrial and payment authorities.
- Global project management teams and experts across regions.
- Innovation on testing methodologies.



Standards

- Android™
- FIDO Biometric Component
- FIDO Identity Verification
 - Document Authenticity (DocAuth)
 - Face Verification
- Mastercard
- ISO/IEC 19795
- ISO/IEC 30107
- NIST/NVLAP (Lab Code 600365-0)
- Visa
- Fime tailored programs
- Environmental bias impact analysis
- Facial recognition
- Fingerprints recognition
- Multi-modalities
- Tailored test strategies (on request)

What we offer

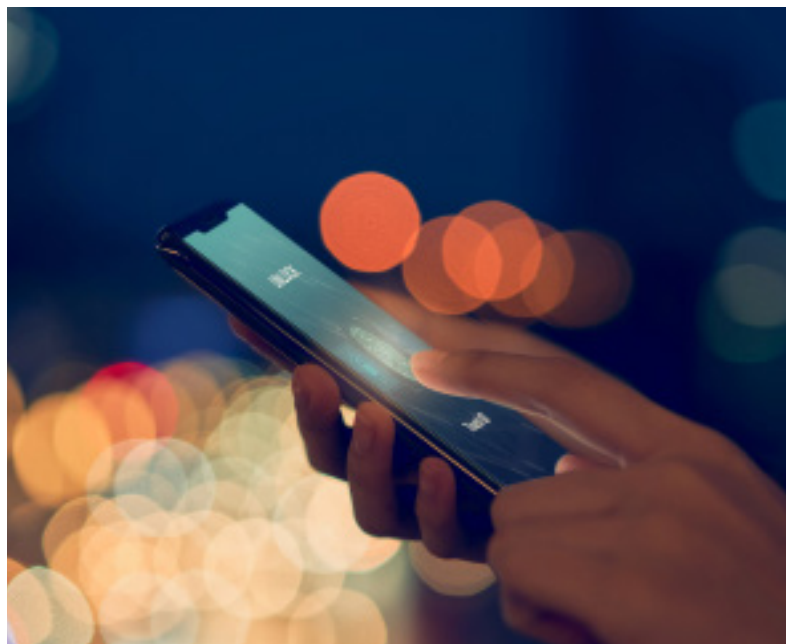
- **Consulting, training, workshops**

Understand the biometric ecosystem, the properties of different modalities, how they are tested and the key considerations to create and launch successful solutions.
- **Testing services**

To ensure the quality of solutions, our testing verifies the performance and Presentation Attack Detection of the sensor, biometric component, authenticator or device.
- **Test strategy customization**

Our laboratory experts collaborate with you to customize every testing strategy with a test plan that meets your business and market needs, and builds trust for your innovation.
- **Benchmark service**

Enables you to evaluate a range of potential solutions or providers, defines indicators to check, and selects the solution or technology.



Why Fime?

- **Trusted testing partner**

Our global ISO / IEC 17025 accredited laboratories have offered leading payment testing services for 20+ years.
- **Engaged in standardization**

Our experts participate in, and contribute to, major biometric standardization initiatives, including FIDO Alliance and AFNOR-ISO working groups.
- **Continuous evolving methodology**

We innovate testing with AI and machine learning, and work to shape the future of evaluation.

Making innovation possible.

Making the world work.

Consulting | Test Platforms | Testing Services

Contact

To learn more about how Fime can help your business:

fime.com

sales@fime.com

F-S-BIOMETRICS-AE
Biometrics testing services.

© Fime 2025