

M2M Server Simulator

Quickly verify and evaluate interoperability between profiles, handsets and eSIMs.

Overview.

M2M Server Simulator is a must-have add-on for the Mobile eUICC Profile Tester, especially for those in the mobile industry. It allows users to load eSIM profiles onto non-removable eSIMs in M2M devices or diagnose issues with eSIM profile compatibility but lack access to a real SM-DP and SM-SR.

Download and manage eSIM profiles on non-removable eSIMs.

M2M Server Simulator module loads eSIM profiles onto inaccessible or non-removable eSIMs inside M2M devices over the cellular Radio Access Network (RAN) interface via a network simulator using a simple configuration user interface.

How it works.

Provides support for ES5, ES6 and ES8 via the RAN interface. It provides equivalent ES2/ES4 profile management function support via the UI and uses ES3 internally but does not expose any ES2, ES3 & ES4 interfaces to the end user.

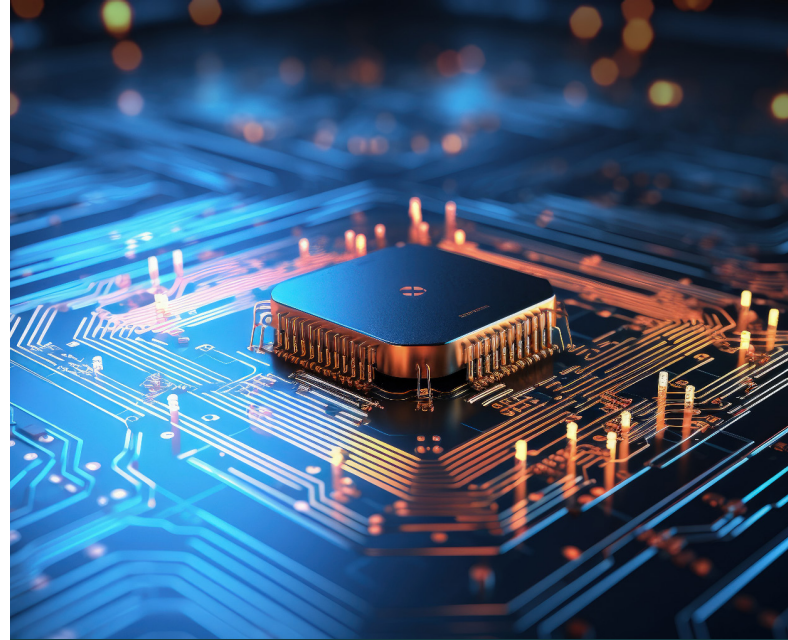
Fime can help you at any stage of your project lifecycle.

Define

Design

Deliver

Test



eSIM profile
interoperability test tool.

Key benefits

- Eliminate the need to book test time on your real SM-DP and SM-SR platforms.
- Extend Mobile eUICC Profile Tester to download and manage eSIM profiles in inaccessible or non-removable eSIMs inside M2M devices.
- Verify and evaluate interoperability between profiles, handsets and eSIMs quickly.

Key features

- Re-use all of the GSMA SGP.02 profile management procedures supported by Mobile eUICC Profile Tester.
- Download and manage eSIM profiles via RF Cellular connectivity on GSMA ES5 & ES8 interfaces.
- M2M Server Simulator runs against an Amarisoft CallBox Mini provided by the customer.

Libraries.

OTA interfaces	ETSI TS 102 225 and 3GPP 31.115 for all connectivity options.
	ETSI TS 102 226 and 3GPP 31.116 for all connectivity options.
GSMA interfaces	SMA ES5 interface to target the eUICC to perform Platform Management, eUICC Management functions, and eUICC Management and function notifications.
	GSMA ES8 interface for profile download.
	Provides GSMA ES1, ES2 and ES4 equivalent functionality but not the GSMA-defined functions at this time.
	GSMA ES6 and ES7 are currently not supported.
Secure channel support	May support GSMA-defined functions or procedures on ES1, ES2, ES4, ES6 and ES7 interfaces in the future.
	Support for SCP80, SCP81 and SCP03 via ES5 interface.
TCA eUICC Profile Package support	Support for SCP03t via ES8 interface.
	Full support of the TCA eUICC Profile Package: Interoperable Technical specification.
TCA eUICC Profile Package support	Verification of ASN.1 syntax for profile templates against different TCA eUICC Profile Package versions.

What’s in the box?

Mobile eUICC Profile Tester Procedures.

GSMA SGP.02 procedures.

- Profile Download and Installation (ISD-P Creation, Key Establishment with Scenario#3-Mutual Authentication, Download and Installation of the profile).
- Profile Enabling.
- Profile Disabling.
- Profile and ISD-P Deletion.
- Default Notification procedure using SMS and HTTPS.
- Fall-Back Activation procedure.
- Update POL1 by MNO procedure.

Proprietary procedures.

- Refresh profile (read out profiles) and audit eUICC.

Technical specifications.

Interoperable with other Fime tools.

- Seamless integration with Mobile eUICC Profile Tester.
- Use eSIM Profile Generator to edit, verify, generate a range of test profiles for your testing.
- Supports Amarisoft CallBox Mini network Simulator.

Making innovation possible.

Making the world work.

Consulting | Test Platforms | Testing Services

Contact

To learn more about how Fime can help your business:
fime.com
sales@fime.com

F-T-M2M-AB
eSIM profile interoperability test tool.
© Fime 2025